



SURVIVING SEPSIS



Background

- Identified as a clinical priority FYE19
- Sepsis tool kit used to drive standard address.
- Organized a market level steering committee to direct and oversee the work.
- Each hospital/region of hospitals had a local implementation sepsis team.

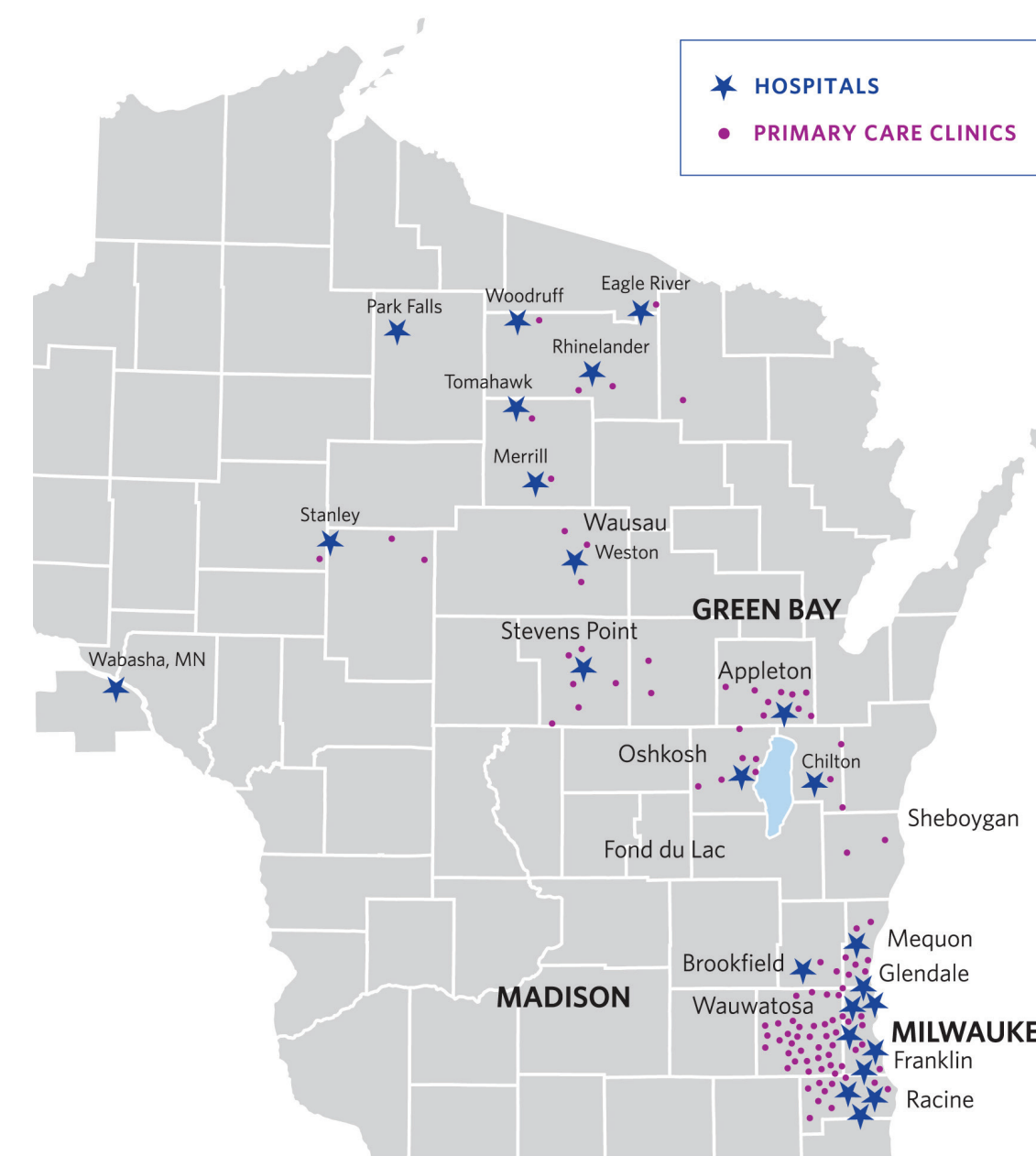
Population setting

About Ascension Wisconsin

In Wisconsin, Ascension operates 24 hospital campuses, more than 100 related healthcare facilities. Ascension employs more than 1,300 primary and specialty care clinicians from Racine to Eagle River.

Serving Wisconsin since 1848, Ascension is a faith-based healthcare organization committed to delivering compassionate, personalized care to all, with special attention to persons living in poverty and those most vulnerable. Ascension is one of the leading non-profit and Catholic health systems in the U.S., operating 2,600 sites of care — including 151 hospitals and more than 50 senior living facilities — in 21 states and the District of Columbia.

One of the greatest challenges was completing this work across five different electronic health record platforms/EHR systems.



Design methods/Implementation

- A3 completed at each hospital site/region to identify gaps related to sepsis tool kit.
- Education on early recognition provided to associates and patients.
- Screening tools and processes developed and implemented.
- Standard treatment order sets for Emergency Department and inpatient developed and implemented.
- Incorporated early recognition of signs and symptoms of sepsis into rapid response process.
- Developed feedback process/loop closure for providers on identified improvement opportunities.
- Developed and implemented a standard mortality review process.
- Monthly action plans by each hospital site/region
- Monthly newsletter communicating education, learning and performance.

Key learnings

- Increased awareness improved bundle compliance.
- Sharing personal stories helped with engagement.
- Engaging patients and families in early recognition important.
- Provider feedback helped with compliance and understanding bundle components.
- Hand-offs between care settings important to ensure transition and management of sepsis, particularly with time-sensitive aspects.

Data

Order set usage and correlation with mortality

Leading With Quality and Safety: Surviving and Healing After Sepsis

Our calling to reduce sepsis mortality

Any one of us could be touched by sepsis.

The young and healthy are not spared.

The most vulnerable are most at risk.

For every case of sepsis, there is a person, a family and a story.



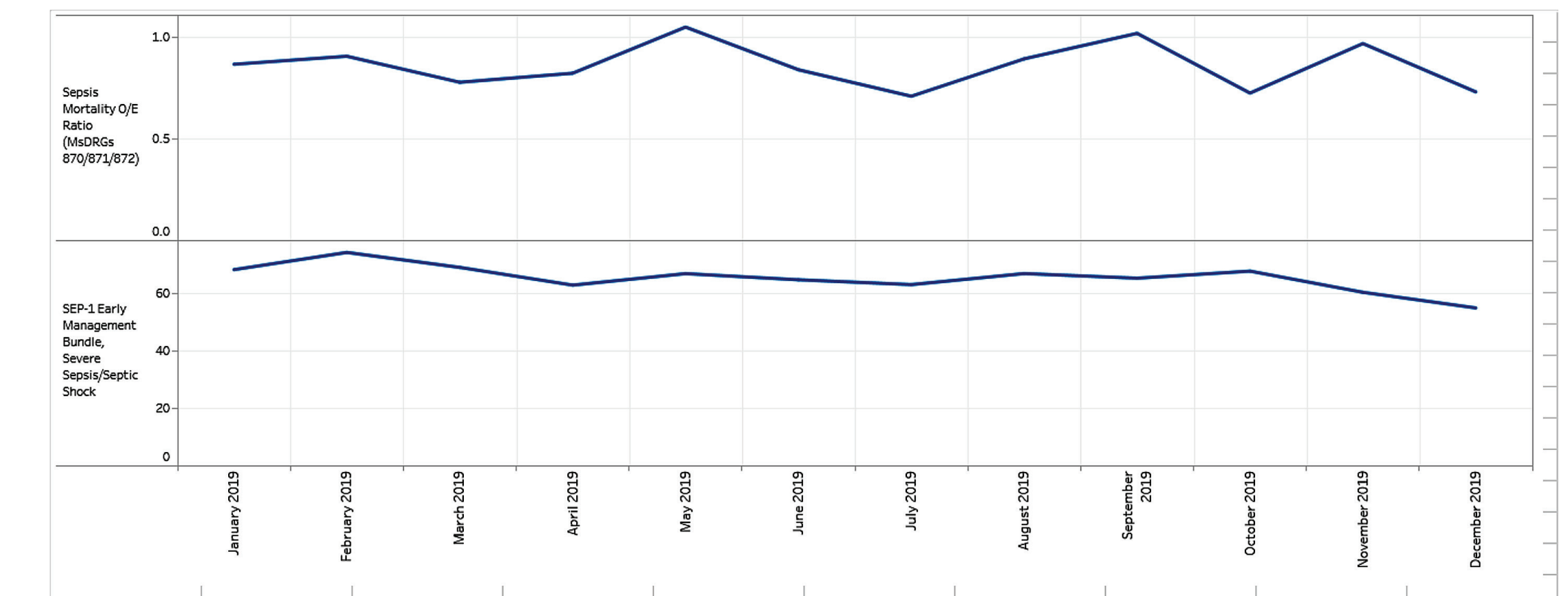
There were an estimated 1.7 million sepsis cases nationwide in 2014 and 270,000 deaths.*

At Ascension, sepsis cases account for approximately 35,000 adult discharges per year.

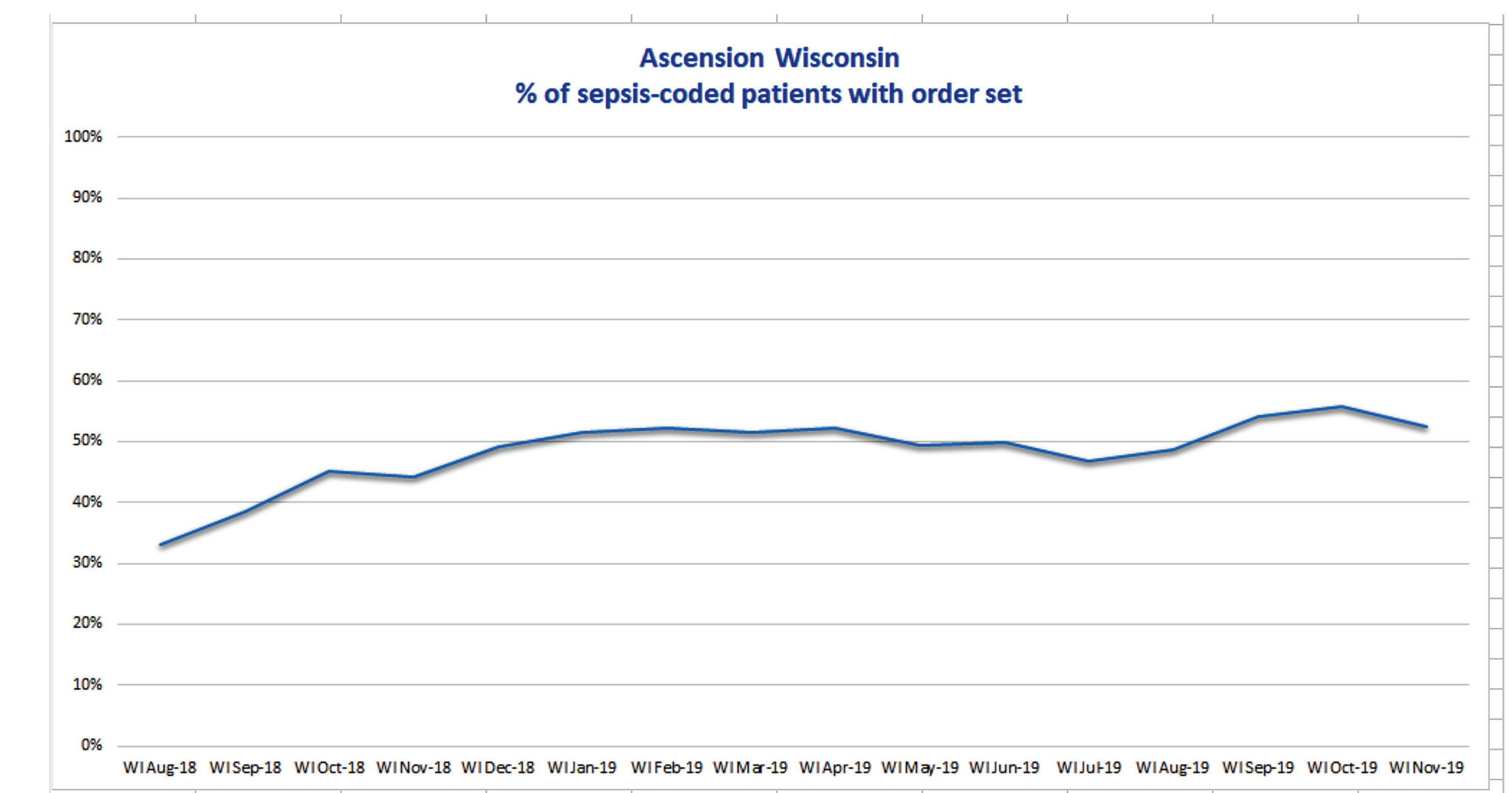
While overall mortality at Ascension hospitals is less than 2%, sepsis mortality in adults with MSDRGs 870, 871 and 872 combined is approximately 10%.

Data (cont'd.)

O/E rates



Bundle compliance



Lives saved

The Ascension way to reduce sepsis mortality in FY19

Reducing adult sepsis mortality by 10% will save lives

System 357 lives saved

Ascension Indiana	41	Ascension Michigan	76	Ascension Tennessee	40	Ascension Texas	27	Ascension Wisconsin	17
Ascension Alabama	34	Ascension Florida	21	Ascension Chicago	3	Ascension Kansas/Oklahoma	50	Ascension Baltimore	15
Ascension Washington, D.C.	8	Ascension Bridgeport, Connecticut	10	Ascension Amsterdam, New York	4	Ascension Binghamton, New York	11		

